

FY2024 ANNUAL REPORT



Letter from the Executive Director

Dear Friends,

I hope you enjoy going through the Community Action Agency of Siouxland's 2024 Annual Report! It serves as a great illustration of the numerous ways our agency serves the low-income families in Woodbury County. I hope you feel the same sense of pride that I do when looking back on all that we have accomplished this past year.

This year's cover is adorned with artwork that the children in our Early Childhood Education programs created during the Week of the Young Child. These are just a few of the paintings that were given out to various community leaders as thank you gifts.

I want to thank our Board of Directors for their commitment to our agency, their dedication to the community, and their leadership throughout the past year. It is through our board and our compassionate staff members that we are able to serve families comprehensively.

As evidenced in the following report, our agency has worked tirelessly to assist every one of the 15,211 people we serve. While the programs and services we provide may change from year to year, we remain a wonderful resource for those in need. There are many in our community who struggle to make ends meet. Our agency will continue to be flexible in finding solutions for every families' specific needs.

I am so grateful for the support and trust we receive from our collaborative partnership initiatives, donors, volunteers, and foundations. Working so closely with you is truly a gift and we applaud all of the work you do for our community. With your support, our agency will continue to address these needs, create new pathways of opportunity, and make this community stronger for years to come.

Sincerely,

Jean Logan
Executive Director

OUR MISSION

Dedicated to building partnerships, strengthening families, and alleviating the causes and conditions of poverty.

103

Families enrolled in
Family Development &
Self-Sufficiency

463

Children enrolled in
Early Childhood
Education

4,650

People impacted by
our emergency food
pantry

3,473

Households received
energy assistance
through LIHEAP

15,211

Total people assisted

262,790

Meals and Snacks
reimbursed through
CACFP

896

Individuals received
Woodbury County
General Assistance

30,223

Volunteer hours

661

Children received
holiday gifts

Ways to Help

DONATE TODAY!

We are always looking for volunteers, financial supporters, and donations of unopened, non-expired items. Here is a wish list of the items we need the most:

NON-PERISHABLE FOOD

Canned Meat, Peanut Butter,
Cereal, Pasta, Pasta Sauce,
Rice, Beans, Canned Fruits
and Vegetables, Stovetop
Meals, Instant Potatoes, etc.

PERSONAL HYGIENE PRODUCTS

Soap, Shampoo, Toothpaste,
Toothbrush, Deodorant,
Razors, Pads/Tampons,
Diapers/Wipes, etc.

CLEANING SUPPLIES

Toilet Paper, Facial Tissues,
Paper Towels, Dish Soap,
Laundry Detergent, Cleaning
Cloths, All-Purpose
Disinfectant, etc.

Get started today by calling us at 712-274-1610 or visiting our
website at www.caasiouxland.org!

Financial Report

REVENUE AND SUPPORT

Federal Government Funding Sources	\$ 10,059,805
State Government Funding Sources	2,145,334
Contributions	469,838
Other Income	74,762
Total Revenue and Support	\$ 12,749,739

EXPENSES

Program Services	
Early Childhood	\$ 8,180,347
Client Assistance	2,480,875
Weatherization	594,535
Other	1,237,769
Total Program Services	\$ 12,493,526
Supporting Services	
Administrative	338,661
Total Expenses	\$ 12,832,187

OTHER INCOME (EXPENSES)

Gain on Disposal of Property/Equip.	\$ 15,000
Change in Net Assets	(67,448)
Net Assets - Beginning of Year	4,765,133
Net Assets - End of Year	\$ 4,697,685

*For the complete audit and 990, please visit our website at www.caasiouxland.org.

BOARD OF DIRECTORS

The Community Action Agency of Siouxland is governed by a local board of directors consisting of a tripartite board with equal representation from public, private, and low-income sectors. Utilizing their personal ideas and experiences, board members provide quality oversight for the agency. The board is a caring group of concerned citizens that believe in the agency's mission, serving a crucial role in its success.

ELECTED REPRESENTATIVES	District 1: Tina Young District 2: Erika Fuentes District 3: Karen Havlicek District 4: Michelle Fiechtner District 5: Pastor Catie Newman Homeless: Tito Parker Head Start: Bobie Themm
REPRESENTATIVES OF PUBLIC OFFICIALS	Early Childhood: Sally Hartley Health: Kevin Grieme SW Rural: Mark Monson Financial: Kevin Kay NE Rural: Keith Radig Welfare: Rachelle Green Comm. Development: Jill Wanderscheid
REPRESENTATIVES OF PRIVATE INTEREST GROUPS	Labor: Tim Hanson Religion: Pastor Sheryl Ashley Legal Counsel: David Dawson Business: Tom Hermann Native American: Trisha Etringer African American: Coretta Mitchell Hispanic: Norma De La O

LEADERSHIP TEAM

Jean Logan	Executive Director
Andy Brown	Fiscal Officer
Scot Orban	Human Resources Director
Rachael Ostermyer	Early Childhood Director
Katie Logan	Development Director
Antoinette Green	Community Services Director
Brandon Newell	Weatherization Director
Julie McFarland	CACFP Program Director
Chelsie Tastad	Executive Secretary



2024 Client Characteristics

GENDER

Male	6,733
Female	8,427
Other/Unknown	11

AGE

0 to 5	2,168
6 to 13	2,758
14 to 17	1,235
18 to 24	1,195
25 to 44	3,874
45 to 54	1,280
55 to 59	574
60 to 64	617
65 to 74	937
75+	499

HOUSING STATUS

Own	1,807
Rent	3,332
Other Permanent Housing	9
Homeless	146
Other	179
Unknown/not reported	78

HOUSEHOLD TYPE

Single Person	1,965
Two Adults No Children	1,093
Single Parent Female	1,150
Single Parent Male	119
Two Parent Household	335
Non-related Adults with Children	26
Multigenerational Household	115
Other/Unknown	605

HEALTH

	Yes	No	Unknown
Disabling Condition	3,614	10,712	845
Health Insurance	12,477	1,662	1,032

HEALTH INSURANCE SOURCES

Medicaid	10,027
Medicare	1,220
State Children's Health Insurance	57
State Health Insurance for Adults	153
Military Health Care	63
Direct-Purchase	336
Employment Based	696

Number indicates the source of health insurance IF an individual reported that they had Health Insurance.

EDUCATION LEVELS

Grades 0-8th	724
Grades 9th-12th/Non-Graduate	1,323
High School Graduate	2,963
GED/Equivalency Diploma	348
12th Grade + Some Post-Secondary	1,074
College Graduate (2 or 4 years)	731
Graduate of Other Post-Secondary	53
Unknown/not reported	464

Number indicates individuals over the age of 25.

RACE

American Indian or Alaskan Native	1,109
Asian	149
Black or African American	1,727
Native Hawaiian or other Pacific Islander	557
White	9,962
Other	268
Multi-race (two or more of the above)	1,053
Unknown/not reported	346

WORK STATUS

Employed Full-Time	1,781
Employed Part-Time	1,022
Unemployed (Not in Labor Force)	3,005
Unemployed (Long-Term or Short-Term)	1,538
Retired	860
Migrant Seasonal Farm Worker	4

15,211 Helped

LEVEL OF HOUSEHOLD INCOMES

Up to 50%	2,278
51% to 75%	561
76% to 100%	696
101% to 125%	545
126% to 150%	429
151% to 175%	324
176% to 200%	217
201% to 250%	112
250% and over	96

Percentage of HHS Guideline. Number indicates number of households.

INCOME SOURCES

Employment Income Only	394
Employment & Other	53
Employment, Other, & Non-Cash	277
Employment & Non-Cash	1,478
Other Income Only	89
Other & Non-Cash	1,565
No Income	169
Non-Cash Benefits Only	987
Unknown/not reported	746

Community Services

ANGEL CARS

This program is a collaborative initiative with Tires Tires Tires who refurbishes donated vehicles in order to provide single working parents with a reliable mode of transportation.

1 VEHICLE GIVEN AWAY



ENERGY CRISIS INTERVENTION PROGRAM (ECIP)

Available to LIHEAP eligible households facing an energy crisis, ECIP focuses on repairs/replacements of furnaces, air conditioners, and utility disconnections.

661 HOUSEHOLDS ASSISTED

EMBRACE IOWA

The Des Moines Register receives donations from Iowans and the funds are used to help families with items such as appliances, medical expenses, eyeglasses, and car repairs.

114 INDIVIDUALS ASSISTED

FAMILY DEVELOPMENT AND SELF-SUFFICIENCY (FaDSS)

This home visiting program is dedicated to building partnerships with Iowa families to alleviate the conditions that cause poverty by building on their strengths of resilience and resourcefulness. FaDSS engages families in dynamic partnerships to address their basic needs, improve child well-being, and develop career opportunities that, in turn, improve lives, families and communities.

103 FAMILIES ENROLLED

GENERAL ASSISTANCE

Assists eligible households at or below 100% of the federal poverty level with heating and water utilities, work clothing, rent, burials, bus tokens, prescriptions, and mortgage payments. This program is funded by the Woodbury County Board of Supervisors.

896 INDIVIDUALS ASSISTED

HOLIDAY HELP

Through generous donations from churches, businesses, schools, and individuals we are able to provide gifts for children and holiday meals to families.

**661 CHILDREN RECEIVED GIFTS
22 HOLIDAY MEALS GIVEN**

ICARE

MidAmerican Energy matches 25 percent of customer donations. These donations are used to pay for water heaters or to help households with utilities.

10 INDIVIDUALS BENEFITED

HOMELESSNESS PREVENTION

Assists individuals and families at risk of homelessness to avoid eviction and remain in affordable housing. This program assists with up to 3 months of rent.

14 FAMILIES BENEFITED

LOW-INCOME HOME ENERGY ASSISTANCE PROGRAM (LIHEAP)

The assistance available to households at or below 200% of the federal poverty level and helps pay a portion of a household's energy bills.

3,407 HOUSEHOLDS ASSISTED

RENT REIMBURSEMENT

Provides a payment to low-income elderly or disabled individuals who rent in the state of Iowa. Applicants must not exceed the threshold determined by the state.

260 HOUSEHOLDS ASSISTED

“Thank you for your leadership and the support you offer to individuals and families like me. I am so thankful you are there for all of us in need. Our community is better because of your agency's dedication.”

Community Services

TENANT-BASED RENTAL ASSISTANCE (TBRA)

TBRA is a subsidized rental assistance program that serves individual households for up to a year. A typical monthly rental allowance is 30% of the monthly adjusted family income.

6 HOUSEHOLDS ASSISTED



EMERGENCY CLOTHING

960



REFERRALS

3,806

WEATHERIZATION

This program helps to make homes more energy efficient by installing items such as insulation, furnaces, water heaters, refrigerators, and freezers. Counties assisted include Woodbury and Monona.

18 HOMES WEATHERIZED



SCHOOL SUPPLIES

335



TRANSPORTATION SERVICES

361

WE CARE

This is an employee-driven fund that helps families in the event of an emergency when there is no other program to help.

WeCare gives staff an opportunity to make a difference for the families they serve.

60 INDIVIDUALS BENEFITED



VENDOR MEDIATION

2,069



CASE MANAGEMENT

204

SUMMER 2024 FLOOD RELIEF

Immediately, our agency was asked to take over the EOC Flood Relief Call Center. With the help of many dedicated volunteers we were able to keep it open the first full week of recovery efforts. We took calls for all of Woodbury County; answering questions, coordinating donations, and providing resource information to anyone seeking guidance. At this time, the agency also began taking applications for the State of Iowa Individual Disaster Assistance Grant Program (IIAGP). Until FEMA stepped in, this was the only financial assistance that families had access to in our county. While maintaining the Call Center, we were notified of the many families affected in Riverside that desperately needed help and had not yet received direction. We took action quickly to set up a Volunteer Reception and Donation Distribution Center at Riverside Lutheran Church. With the help of the church members and Junior League of Sioux City volunteers, we were able to staff the center, record volunteer hours, and distribute supplies directly to those in need over the next three weeks. Once FEMA was declared for Woodbury County, the IIAGP ended and our agency began providing Disaster Case Advocacy, a case management program that promotes budgeting and coordination of resources.

Through partnerships with the Waitt Foundation, Siouxland Recovery Fund, Salvation Army, Orphan Grain Train, and Missouri River Historic Development, we disbursed over **\$300,000.00** worth of assistance to families in need. We also attended many resource fairs, maintained a steady presence on social media, and educated numerous individuals, families, and agencies on the resources available in our community. We thank our staff, the Woodbury County Emergency Management Team, the COAD (Community Organizations Active in Disaster), and the many MANY volunteers that have given their time, energy, and resources to help those in need. We are very grateful to be a continuing resource for not only the families affected by the flooding, but to everyone in our community.



782 INDIVIDUALS IMPACTED



“Our lives changed due to the flood of 2024. We wanted to say thank you for your time and support. We are now focused on rebuilding and your help was so appreciated!”
- The Millers

Heath and Nutrition

CHILD AND ADULT CARE FOOD PROGRAM (CACFP)

Funding from the U.S. Department of Agriculture is used to reimburse registered day care providers for serving nutritious meals and snacks in Cherokee, Ida, Plymouth, and Woodbury Counties. Providers take part in regular nutrition education.

50 REGISTERED DAY CARES
262,790 MEALS/SNACKS REIMBURSED

CHILD CARE NURSE CONSULTANT

Our nurse consultant provides on-site consultation, training and support to child care businesses, both in-home and at centers, to promote safe and healthy environments in Ida and Woodbury Counties.

107 BUSINESSES

Harvest time! Our wonderful Community Garden yielded over 300 pounds of the fresh produce last summer! All items harvested were given out to families through our food pantry. A huge thanks to Julie McFarland, for putting in the work to make this garden's harvest successful!



GEORGE J. WILLIAMS MEMORIAL FOOD BANK

This is the ONLY food pantry in the area open to the public 40 hours a week. This emergency pantry provides Woodbury County residents with three to five days’ worth of food as well as basic personal and household hygiene items when needed. Distribution varies by household size and situation.



PEOPLE IMPACTED

	INDIVIDUALS
	4,650
	2,770

There continues to be an unprecedented increase in the number of families assisted in the past year. In order to keep up with the heightened demand, the agency relies on donations from generous groups and individuals in Siouxland. Through the Sunnybrook Hope Center and their partnership with Tyson Foods, the food pantry’s freezers are continuously filled with frozen meat to be distributed to every household we serve. Furthermore, non-perishables, silverware, and can openers are available for homeless families and dietary restrictions are accommodated upon request.



Up From the Earth encourages gardeners to “grow an extra row” every year! They then gather and distribute the extra produce to local food pantries. As a recipient of this local initiative, we were able to provide individuals and families with about 200 pounds of fresh produce in 2024!

Early Childhood Education

OUR COMMUNITY

Nearly one in six children under the age of five in Woodbury County live in poverty. Additionally, over 97% of children under the age of five in single parent households live in poverty.¹ Research shows that children in poverty are less likely than their peers to be ready for school. Head Start provides crucial early learning opportunities to young children while also supporting and empowering their families. Our agency has been providing Head Start services in the community since 1972.

HEAD START/EARLY HEAD START

During the 2023-24 school year, Head Start assisted a total of 353 preschool children. Head Start has a funded enrollment of 304 slots and operates 18 classrooms throughout Sioux City.

The Early Head Start program serves pregnant women and children up to age three. Eight Early Head Start classrooms serve children who are 6 weeks up to three years old. Home visitation serves pregnant women and children in their home. Early Head Start has a funded enrollment of 124. During the 2023-24 school year, we assisted a total of 177 children and 18 pregnant women.

The program maintained an active waiting list of eligible participants. Throughout the year, 92% of Head Start eligible children were served and 77% of Early Head Start eligible children were served; with an overall program total of 86%.

OTHER EARLY CHILDHOOD PROGRAMS

The agency also operates several other state early childhood preschool programs. The Shared Visions program funded three classrooms serving 48 at-risk children. The Preschool Initiative program is a statewide voluntary preschool program for four-year olds and is operated in partnership with the Sioux City Community School District. This past year we received funding for 179 Head Start and Shared Visions four-year old enrollment slots. Additional home visitation programs included the federal Maternal, Infant and Early Childhood Home Visitation (MIECHV) program funding 20 families assisted through the Parents as Teachers model. The Iowa Department of Education funded 26 children through state-funded Early Head Start and Shared Visions grants.

¹ U.S. Census Bureau American Community Survey Five-Year Estimates, 2016-2020

ENROLLMENT (SEPTEMBER 2023 - AUGUST 2024)

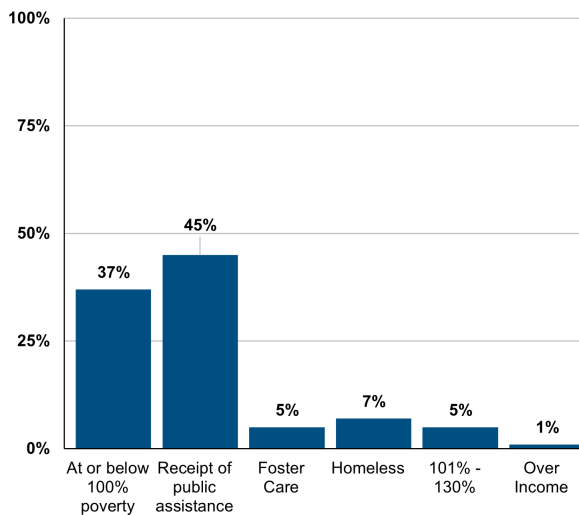
	Funded Enrollment Slots	Total Number of Children/Pregnant Women Assisted	Total Number of Families Assisted
Early Head Start	124	195	156
Head Start	304	353	324
Shared Visions	48	61	61
MIECHV	20	30	30
State Early Head Start	13	17	13
Shared Visions Home Visitation	13	17	13

AVERAGE MONTHLY ENROLLMENT AS A PERCENTAGE OF FUNDED ENROLLMENT

	SEP	OCT	NOV	DEC	JAN	FEB	MAR	APR	MAY	JUN	JUL	AUG
HST	94%	100%	100%	100%	100%	100%	100%	100%	100%	-	-	-
EHS	100%	98%	96%	95%	98%	99%	100%	100%	100%	100%	100%	100%
TOTAL	96%	99%	99%	99%	100%	100%	100%	100%	100%	100%	100%	100%

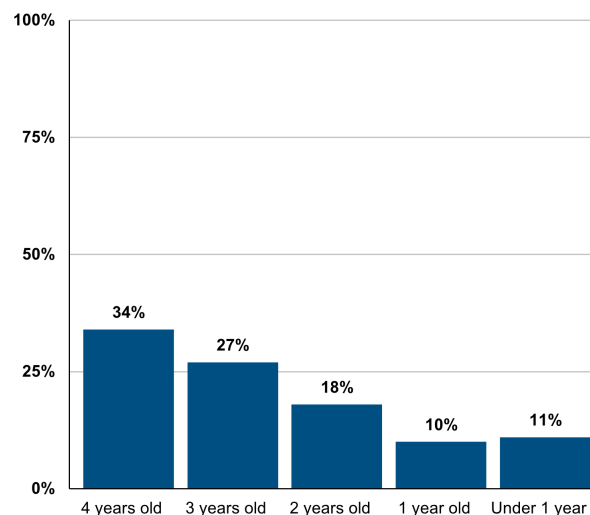
HST = Head Start, EHS = Early Head Start

TYPE OF ELIGIBILITY



Cumulative n = 548 HST/EHS Children & Pregnant Women

PROGRAM PARTICIPANTS BY AGE



Cumulative n = 530 HST/EHS Children Only

Mission: To promote school readiness for children and families through the provision of education, health, nutrition, mental health and family support services.

Early Childhood Education

SCHOOL READINESS

The program's approach to school readiness means that children are ready for school, families are ready to support their children's learning, and schools are ready for children. The program begins to prepare children for kindergarten from the moment a child is enrolled in the program by enhancing their social and cognitive development through the provision of education, health, nutritional, social and emotional services.

Every year the program transitions a large number of children to kindergarten by working with both families and school districts to ensure a successful transition by:

- Conducting two parent-teacher conferences and two home visits throughout the year;
- Providing information to parents about their child's kindergarten placement, including information on registration/enrollment dates and times;
- Delivery of a transition packet for parents with information about summer learning opportunities, school readiness activities, and a Kindergarten transition book.
- The provision of classroom transitioning activities conducted in the spring, such as cafeteria style serving, reading stories about kindergarten, and visiting a nearby kindergarten classroom if applicable;
- Forwarding a transition form and child records to the receiving school district.

At the end of 2023-2024 school year, the program transitioned a total of

202
children

to kindergarten.



CHILD OUTCOMES

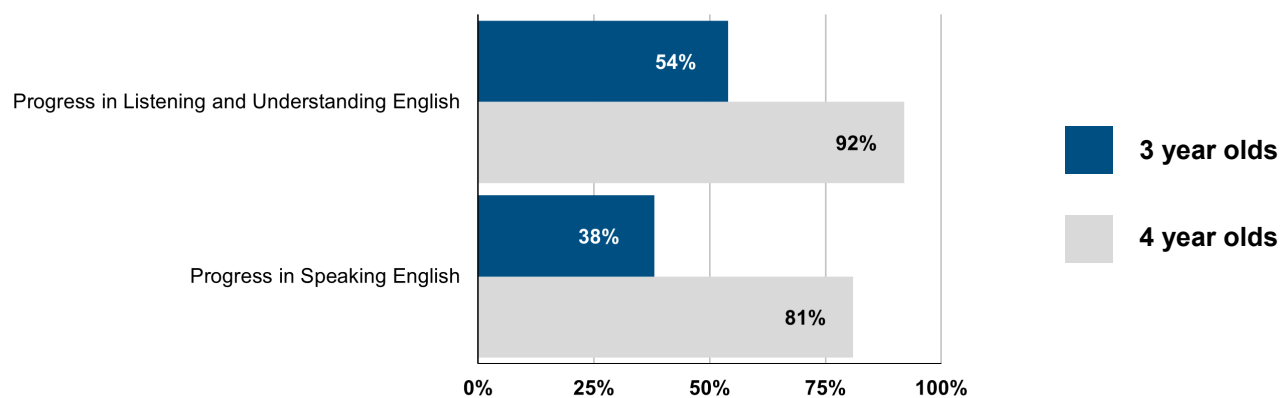
The programs use Teaching Strategies GOLD® for individual child assessment and to monitor the percentage of children that meet school readiness program expectations. This tool tracks child progress in measurable areas of growth and development three times per year. Progress is monitored by staff and parents in order to make informed decisions on goals and individualization that will help each child as they work towards school readiness.

2023-2024 SCHOOL READINESS OUTCOMES

	Birth to 1	1 - 2 years	2 - 3 years	Preschool 3	Preschool 4
Positive Approaches to Learning	98%	97%	88%	96%	94%
Social Relationships	100%	93%	87%	94%	87%
Self-Regulation	96%	94%	91%	96%	91%
Communication	99%	91%	89%	85%	91%
Literacy	100%	99%	89%	83%	84%
Math Concepts	N/A	97%	87%	85%	78%
Fine/Gross Motor	95%	93%	93%	98%	97%

Percent of children meeting age expectations at year end

ENGLISH LANGUAGE ACQUISITION



"This is a wonderful program in my experience. They helped me with the academic and emotional growth of my children, preparing them for kindergarten."

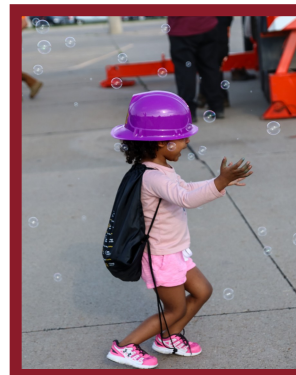
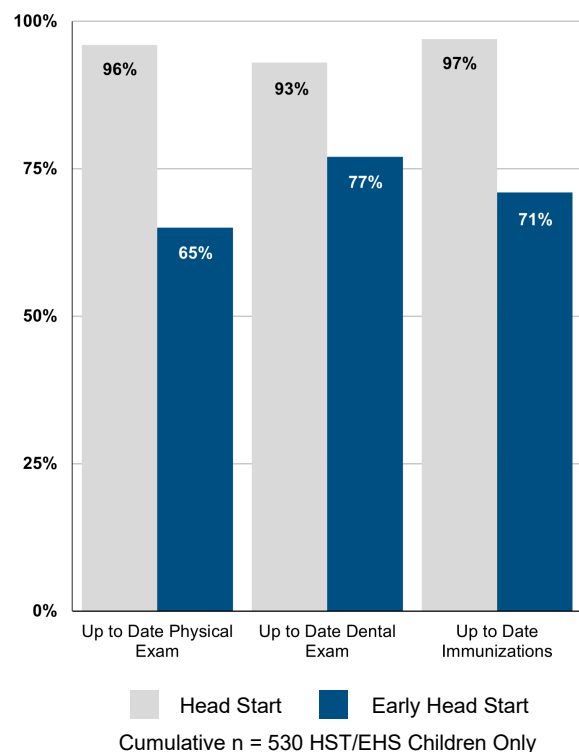
Early Childhood Education

HEALTH

Head Start and Early Head Start promote preventative health services and early intervention to pregnant women and children. Well-child exams, immunizations, dental exams, blood lead and hemoglobin testing, and tuberculosis skin tests if a risk is present, are conducted according to Iowa's Early and Periodic Screening, Diagnostic and Treatment (EPSDT) standards.

Services to Pregnant Women	# of Women
Total Women Assisted	18
Prenatal Health Care	18
Postpartum Health Care	10
Mental Health Interventions	1
Substance Abuse Interventions	12
Substance Abuse Treatment	2
Prenatal Education on Fetal Development	17
Information on Benefits of Breastfeeding	13

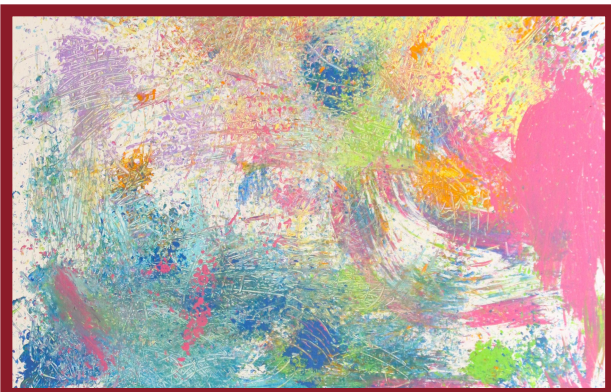
CHILDREN HEALTH SERVICES



FAMILY

Parent and family engagement in Head Start/Early Head Start focuses on building positive relationships with families that support family well-being, strong relations between parents and their children, and ongoing learning and development for both parents and children. Throughout the year parents had an opportunity to engage in the following events and activities:

- Health Screening & Education Event
- Parent Orientation
- Parent Meetings
- Coffee Connections with Community Resources
- On-site classes for CPR, gardening, and the Buy, Eat, Live Healthy nutrition curriculum
- Research-based Parenting Curriculums offered through the Crittenton Center
- Home Visitation Socializations
- Weekly School Readiness Activities
- “Take 5” Parent/Child Activities
- Family Book Club
- Ready 4K Texting Curriculum
- Parent/Teacher Conferences
- Home Visits
- Family Goal Setting
- Big Truck Night
- Virtual and In-person Policy Council
- Iowa Head Start Association Conferences - Policy Council
- Virtual Health Services Advisory Committee
- Assistance with Economic Mobility Goals (GED, ESL classes, college credential, obtaining employment, budgeting/savings)
- Access to LaunchPAD Children’s Museum and Omaha’s Henry Doorly Zoo & Aquarium family passes



“This is the first time I feel the ‘village’ that people talk about when raising children. It takes a village.”

Early Childhood Education

PROGRAMS REPORT

HEAD START/EARLY HEAD START BUDGET AND EXPENDITURES

07CH11695-04 Grant Expenditures	Head Start		Early Head Start	
	Budget	Expenditures	Budget	Expenditures
Personnel	\$1,845,308.00	\$1,768,472.49	\$1,386,022.00	\$1,281,883.33
Fringe Benefits	\$613,778.00	\$543,042.27	\$460,025.00	\$440,323.62
Travel	\$4,512.00	\$3,668.29	\$4,646.00	\$5,067.11
Equipment	\$78,864.00	\$78,414.00	\$0.00	\$0.00
Supplies	\$53,355.00	\$276,834.12	\$45,045.00	\$69,948.31
Other	\$278,368.00	\$312,589.96	\$176,077.00	\$219,286.44
Indirect Costs	\$425,424.00	\$388,621.54	\$319,367.00	\$302,639.52
Grant Totals	\$3,299,609.00	\$3,371,642.67	\$2,391,182.00	\$2,319,148.33
Grant Non-Federal Match	\$750,246.00	\$897,902.21	\$254,017.00	\$243,369.47
CACFP Reimbursements	\$280,705.72	\$280,705.72	\$72,682.76	\$72,682.76
CSBG Co-funded Expenditures	\$52,947.97	\$52,947.97	\$18,896.53	\$18,896.53
Total Program Expenditures	\$4,383,508.69	\$4,603,198.57	\$2,736,778.29	\$2,654,097.09

Note 6 - Budget/Award period for 07CH11695-04 is March 1, 2023 to February 29, 2024

Note 7 - Head Start and Early Head Start budget and expenditures include Training & Technical Assistance amounts of \$35,899 for Head Start and \$46,865 for Early Head Start.

HEAD START/EARLY HEAD START PROGRAM REVENUE BY SOURCE

U.S. Department of Health & Human Services	\$5,762,635.50
U.S. Department of Agriculture	\$353,388.48
Sioux City School District - Preschool Initiative	\$520,151.84
Volunteers and Donations	\$621,119.84
Total Program Revenue	\$7,257,295.66

MOST RECENT FEDERAL REVIEW

From November 16, 2022 to January 14, 2023, the Administration for Children and Families (ACF) conducted an Office of Head Start CLASS® Video Pilot review of the Head Start program. The CLASS® Video Pilot provided an opportunity for the Office of Head Start's monitoring team to ascertain the feasibility, efficiency, and quality of classroom observations obtained through video recordings in comparison to those obtained during in-person visits. As part of the pilot review, scores from the observations were not used for Designation Renewal System (DRS) purposes.

Observations were conducted in preschool center-based classrooms using the Classroom Assessment Scoring System (CLASS®). The CLASS® tool looks at three domains and ten dimensions of teacher-child interactions and measures those unassisted interactions on a seven-point scale. Sixteen of our 19 Head Start classrooms received a CLASS® video observation and the overall results are listed below. Training and technical assistance (TTA) was available through online resources as a first step if scores from the CLASS® review fell below the quality or competitive threshold for one or more CLASS® domains.

DOMAIN	SCORE	Quality Threshold	Competitive Threshold
Emotional Support*	5.7031	6	5
Classroom Organization	5.3021	6	5
Instructional Support	2.6458	3	2.3**

*To calculate the Emotional Support domain, subtract the Negative Climate score from 8, add the Positive Climate, Teacher Sensitivity, and Regard for Student Perspective scores, then divide by 4.

**The competitive threshold for Instructional Support is 2.3 for CLASS® reviews conducted through July

DIMENSION	SCORE	DIMENSION	SCORE
Positive Climate	5.50	Productivity	5.53
Negative Climate	1.22	Instructional Learning Formats	4.94
Teacher Sensitivity	5.41	Concept Development	2.16
Regard to Student Perspectives	5.13	Quality of Feedback	2.38
Behavior Management	5.44	Language Modeling	3.41



CONNECT WITH US:



(712) 274 - 1610



2700 Leech Avenue
Sioux City, IA 51106



www.caasiouxland.org



Community Action
Agency of Siouxland



@caasiouxland

This report is for the fiscal year that ended September 30, 2024. Unless otherwise noted, service totals, statistics, and outcomes are for the period October 1, 2023 through September 30, 2024.